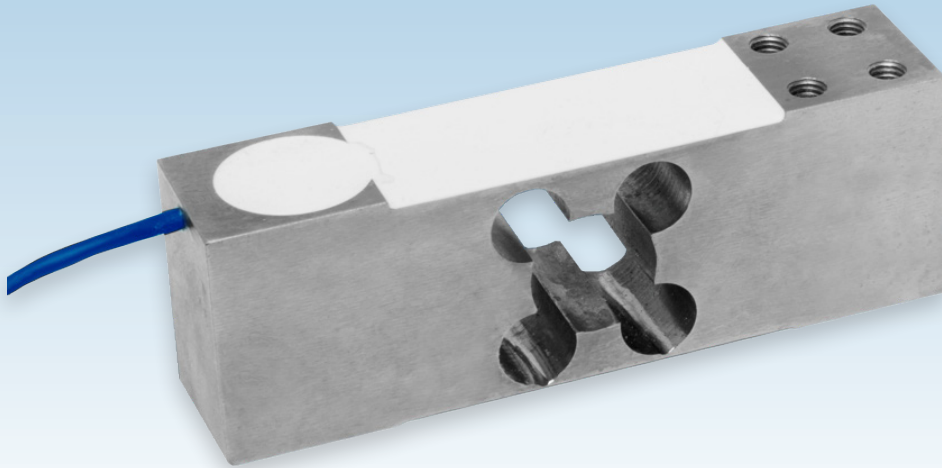


SINGLE POINT LOAD CELL

capacities 50kg - 400kg



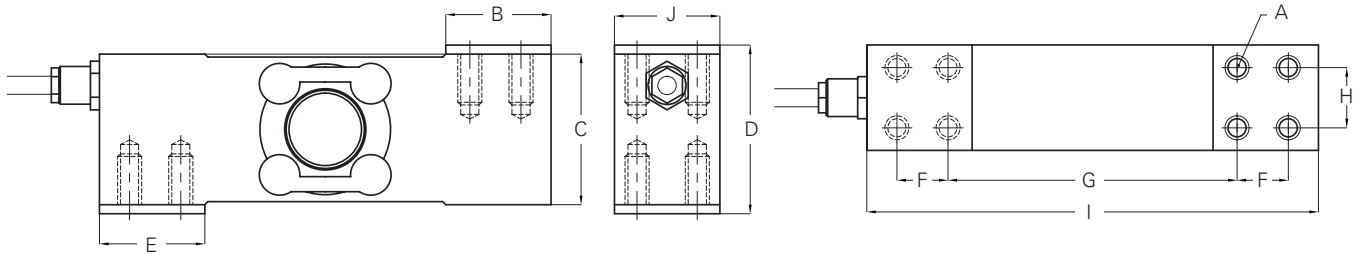
The T12A double bending beam single point load cell is ideal for high accuracy weight measurement with off-centre loads when the environment does not require stainless steel. Its nickel plated alloy steel construction, with silicone sealing to IP66, provides a cost-effective solution that is approved to 4000 divisions OIML R60 Class C. As standard, the T12A is supplied with a screened polyurethane cable; this provides a higher level of resistance to cuts and damage than a PVC cable.

Typical applications include weighing platforms with dimensions up to 800mm x 800mm; bagging, filling and dosing machines; medical scales; checkweighers; small bucket and hopper systems.

- Nickel plated alloy steel load sensor
- Silicone sealed to IP66
- OIML R60 Class C 4000 divisions (C4)
- Cost-effective solution
- 5 year warranty
- High accuracy with off-centre loads
- 600x600 mm or 800x800 mm platform size (with load cell placed centrally under the platform)
- High durability Polyurethane cable provides higher resistance to chemicals than PVC

T12A

technical specification...



Qty. 2 spacer plates supplied with load cell, as shown above

T12A Load Cell

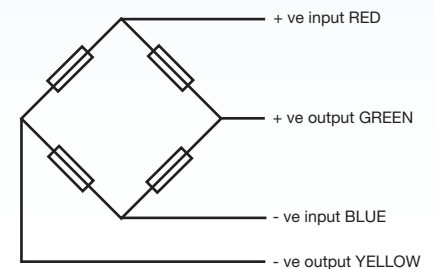
	Load cell specifications	Units	
Load Cell Capacities	50, 75, 120, 200, 250, 350, 400	kg	
Accuracy Class	4000	n.OIML	
Rated Output	2	mV/V +/- 10%	
Combined Error	< +/- 0.017	%*	
Non-repeatability	< +/- 0.01	%*	
Creep (30 minutes)	< +/- 0.016	%*	
Temperature Effect on Zero Balance	< +/- 0.002	%* / °C	
Temperature Effect on Span	< +/- 0.0012	%* / °C	
Compensated Temperature Range	-10 to +40	°C	
Operating Temperature Range	-20 to +70	°C	
Minimum Dead Load	0	%*	
Safe Overload	150	%**	
Ultimate Overload	200	%**	
Zero Balance	< +/- 2	%*	
Maximum Deflection at Nominal Capacity	0.3 to 0.5	mm	
Input Resistance	400	Ω +/- 20	
Output Resistance	350	Ω +/- 3	
Insulation Resistance	> 5000	MΩ @ 100V	
Recommended Supply Voltage	10	V	
Maximum Supply Voltage	15	V	
Environmental Protection	IP66		
Cable Length	5	m	
Maximum Platform Size*	50, 75, 120, 200, 350 kg	600 x 600	mm
	250, 400 kg	800 x 800	
Nominal Shipping Weight	50, 75, 120, 200, 350 kg	1.8	kg
	250, 400 kg	4.3	

- * With respect to rated output
- ** Only applies to central loads on the load cell. Not for off-centre loads.
- * The load cell must be placed centrally under the platform.

Dimensions

Capacity (kg)	50, 75, 120, 200, 350	250, 400
A	8 off M8 x 1.25 x 14	8 off M10 x 1.5 x 20
B	35	50
C	50	60
D	56	66
E	35	50
F	17	30
G	96	100
H	20	40
I	150	180
J	35	60

Dimensions in mm



Electrical Connections

Via 4 wire, 5.7mm diameter, screened polyurethane cable.
Screen not connected electrically to load cell.



AUSTSYS TECHNOLOGIES PTY LTD

9 Yiannis Court, Springvale VIC 3171, Australia
T: 1300 212 174

info@austsystechologies.com.au www.austsystechologies.com.au

Our policy is one of continuous product enhancement. We therefore reserve the right to incorporate technical modifications without prior notification.



THAMES SIDE SENSORS LTD

Unit 10, io Trade Centre, Deacon Way,
Reading, Berkshire RG30 6AZ, UK

Issue: T12A.12.16

