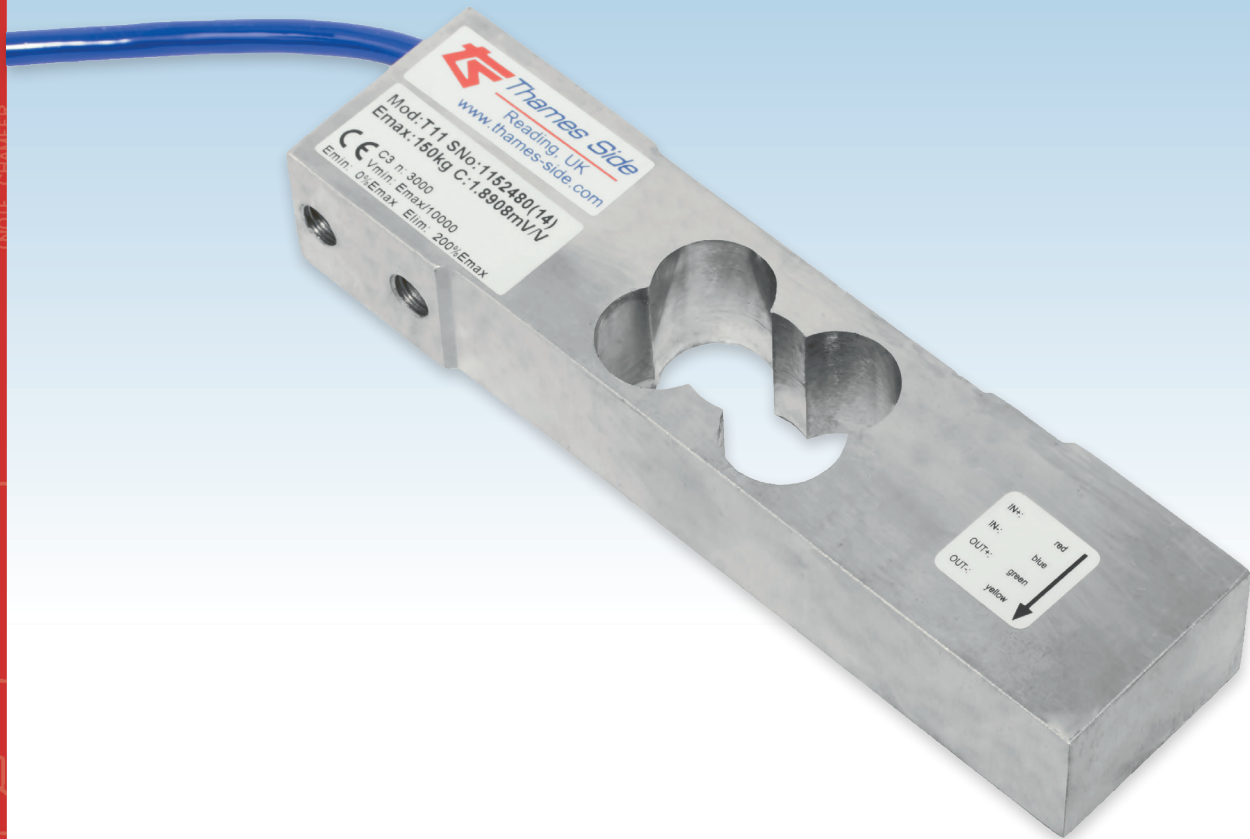


# T11

## SINGLE POINT LOAD CELL

capacities 15kg - 150kg



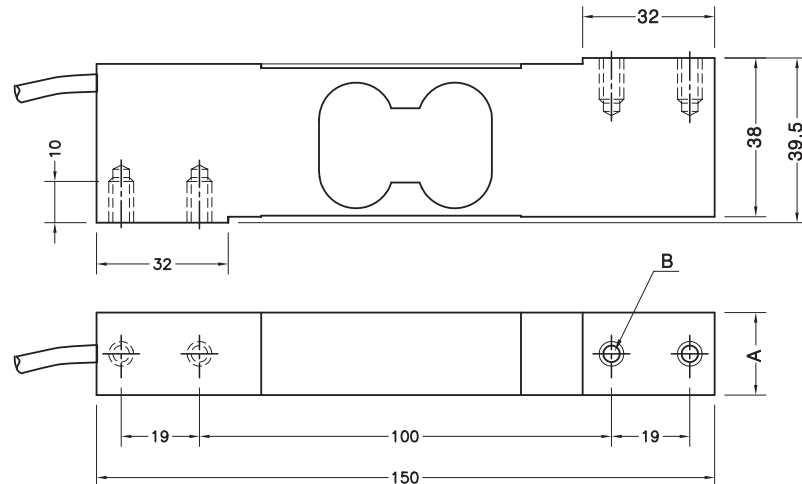
This double bending beam single point load cell is manufactured from high quality alloy steel and nickel plated. Its design allows for high accuracy weigh measurement with off-centre loads and it's potted and sealed to IP66.

Typical applications include: single point platforms up to 500x500mm in size, small buckets and hoppers supported by a single load cell, small bagging and dosing machines, filling scales and checkweighers.

- Nickel plated alloy steel load sensor
- Potted and silicone sealed to IP66
- 3000 divisions OIML R60 Class C
- 5 year warranty
- 500 x 500mm max. platform size (with load cell placed centrally under platform)
- High durability Polyurethane cable

# T11

technical specification...



## T11 Load Cell

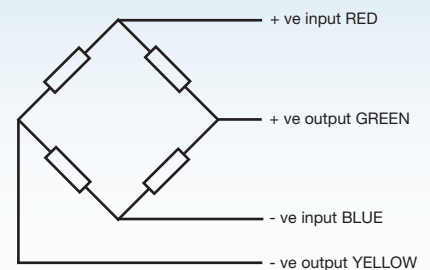
|  | Load cell specification      | Units              |
|--|------------------------------|--------------------|
| Load Cell Capacity ( $E_{max}$ )                                   | 15, 20, 30, 50, 75, 100, 150 | kg                 |
| Rated Output ( $S_n$ )   | 2                            | mV/V $\pm$ 10%     |
| Accuracy Class   | 3000 (See Note 1)            | n.OIML             |
| Combined Error   | $< \pm 0.017$                | % $S_n$            |
| Non-repeatability  | $< \pm 0.01$                 | % $S_n$            |
| Minimum load cell verification interval ( $V_{min}) = E_{max} / Y$ | $E_{max} / 10000$            | kg                 |
| Creep (30 minutes)   | $< \pm 0.016$                | % $S_n$            |
| Temperature Effect on Zero Balance                                 | $< \pm 0.002$                | % $S_n / ^\circ C$ |
| Temperature Effect on Span   | $< \pm 0.0012$               | % $S_n / ^\circ C$ |
| Compensated Temperature Range                                      | -10 to +40                   | $^\circ C$         |
| Operating Temperature Range  | -20 to +70                   | $^\circ C$         |
| Safe Overload  | 150                          | % $E_{max}$ *      |
| Ultimate Overload  | 200                          | % $E_{max}$ *      |
| Zero Balance   | $< \pm 2$                    | % $S_n$            |
| Input Resistance   | 400                          | $\Omega \pm 20$    |
| Output Resistance  | 350                          | $\Omega \pm 3$     |
| Insulation Resistance  | $> 5000$                     | M $\Omega$ @ 100V  |
| Recommended Supply Voltage   | 5-15                         | V                  |
| Maximum Supply Voltage   | 15                           | V                  |
| Environmental Protection   | IP66                         |                    |
| Maximum deflection at $E_{max}$                                    | 0.3-0.5                      | mm                 |
| Cable length   | 3                            | m                  |
| Cable Material   | Polyurethane                 |                    |
| Maximum Platform Size +  | 500 x 500                    | mm                 |
| Nominal Shipping Weight (15 - 30kg)                                | 1.0                          | kg                 |
| Nominal Shipping Weight (50 - 150kg)                               | 1.2                          | kg                 |

1. OIML C3 approval is available from 15kg to 75kg (inclusive)  
 \* Only applies to central loads on the load cell. Not for off-centre loads.  
 + The load cell must be placed centrally under the platform

## Dimensions

| Range (kg) | 15 - 30 | 50 - 150 |
|------------|---------|----------|
| A          | 20      | 25       |
| B          | M6      | M8       |

Dimensions in mm



## Electrical Connections

Via 4 wire, 5.7mm diameter, screened polyurethane cable.  
 Screen not connected electrically to load cell.

## Construction

High quality nickel plated alloy steel



## AUSTSYS TECHNOLOGIES PTY LTD

9 Yiannis Court, Springvale VIC 3171, Australia  
 T: 1300 212 174

info@austsystechnologies.com.au www.austsystechnologies.com.au

Our policy is one of continuous product enhancement. We therefore reserve the right to incorporate technical modifications without prior notification.



## THAMES SIDE SENSORS LTD

Unit 10, io Trade Centre, Deacon Way,  
 Reading, Berkshire RG30 6AZ, UK

Issue: T11.03.19

